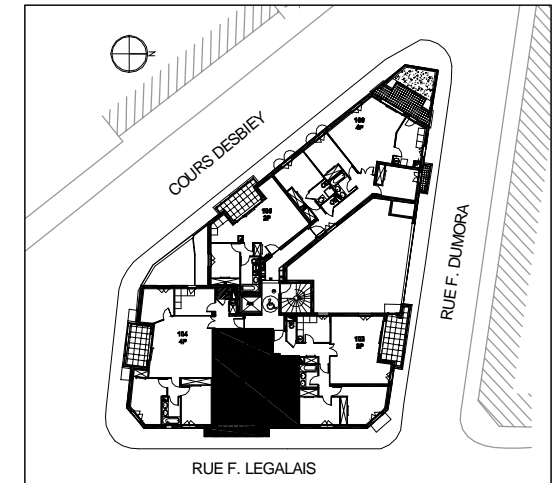
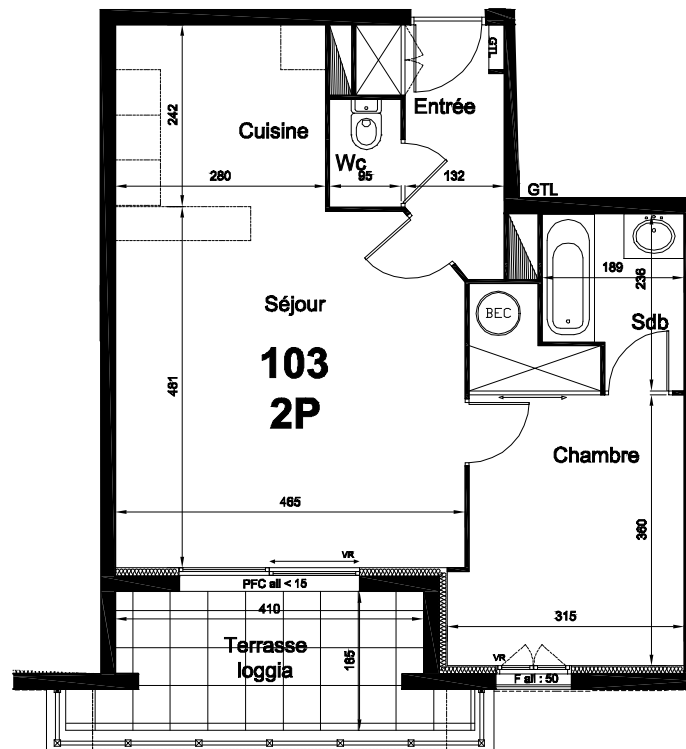


" L'AZULIE "



N°103 C

2 PIECES

R+1

ENTREE	4.5m ²
SEJOUR	21.4m ²
CUISINE	7.2m ²
CHAMBRE	12.6m ²
SDB	3.9m ²
WC	1.3m ²

TOTAL HABITABLE 50.9m²

TERRASSE LOGGIA 8.2m²

